



[HOME \(/\)](#) [CAPABILITIES \(/capabilities/Capabilities\)](#) [ABOUT US \(https://support.jlpcb.com/category/15-get-started\)](#) [FORUM \(https://easyeda.com/forum\)](#)

[CALCULATE \(/quote\)](#) [CART \(/order/cart\)](#)

[LOGIN \(/auth/login\)](#) | [REGISTER \(https://passport.easyeda.com/register?service=https%3A%2F%2Fjlpcb.com%2Fauth%2Flogin%3Fcode%3DA&from=jlcb\)](#)

(/quote)

PCB Prototype

SMT Stencil

### INSTANT QUOTE

Full feature prototype PCB custom service at low cost.

#### Dimensions

100 X 100 mm

#### Quantity

Choose Num (10pcs) ▼

#### Layers

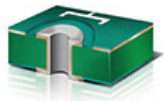
2 Layers ▼

#### Thickness

1.6 mm ▼

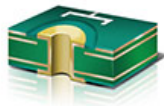
**QUOTE NOW**

2 Layers



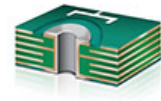
FR4,1.6mm,1 oz,HASL,

4 Layers



FR4,1.6mm,1 oz,HASL,

6 Layers



FR4,1.6mm,1 oz,HASL,

SMT-Stencil



Green Solder Mask,White silkscreen

**\$2.00**/10pcs

Size ≤ 100×100mm

**\$58.00**/m<sup>2</sup>

Build Time:2 days

[Quote Now](#)

Green Solder Mask,White silkscreen

**\$15.00**/10pcs

Size ≤ 50×50mm

**\$110.00**/m<sup>2</sup>

Build Time:4-5 days

[Quote Now](#)

Green Solder Mask,White silkscreen

**\$80.00**/10pcs

Size ≤ 50×50mm

**\$168.00**/m<sup>2</sup>

Build Time:7-8 days

[Quote Now](#)

190mm × 290mm Frameless

**\$7.00**/1pcs

Build Time:24hours

[Quote Now](#)

## WHY CHOOSE JLCPCB?

More than **200,000** customers worldwide trust JLC, **8000** + online orders per day,JLCPCB (Shenzhen JIALICHUANG Electronic Technology Development Co.,Ltd.), is the largest PCB Prototype enterprise in China and a high-tech manufacturer specializing in quick PCB Prototype and small-batch production.Affordable, series quality boards fully manufactured in China. Fully e-tested. Transparent pricing.

### Affordable Price



Only \$99/m<sup>2</sup> for 2-layer PCBs and \$150/m<sup>2</sup> for 4-layer PCBs \$2 for 10\*10cm PCB Prototype and Stencil is as low as \$9

### Quality Guarantee



PCBs are 100% AOI-tested and made of A-level boards material.

### Delivery Assurance



Expedited orders, up to 99% On-time delivery; Normal orders, up to 95% On-time delivery.

### Advanced Production Line



PCBs are 100% AOI-tested and made of A-level boards material.

### Customer Approval



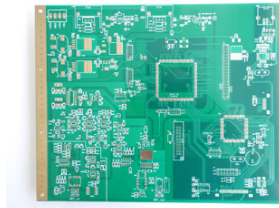
200,000+ active customers using JLCPCB service. 8,000+ online orders per day.

### Quick Order

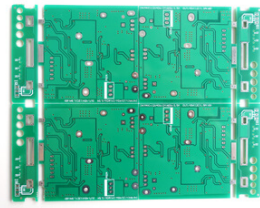


Just upload Gerber file to get quote automatically and order online easily. Powerful ERP system allows you to track your order-processing status.

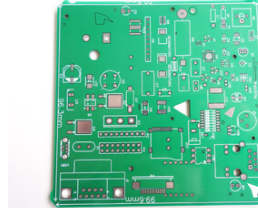
## Product Show



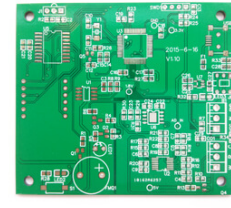
(/bigPic/1)



(/bigPic/2)



(/bigPic/3)



(/bigPic/4)

### PCB CAD SUPPORT

Free PCB Editor (<https://easyeda.com/>)

Online gerber viewer (<http://gerber-viewer.easyeda.com/>)

Altium PCB to gerber files (<https://support.jlpcb.com/article/42-how-to-export-altium-pcb-to-gerber-files>)

Eagle PCB to gerber files (<https://support.jlpcb.com/article/43-how-to-export-eagle-pcb-to-gerber-files>)

Kicad PCB to gerber files (<https://support.jlpcb.com/article/44-how-to-export-kicad-pcb-to-gerber-files>)

Diptrace PCB to gerber files (<https://support.jlpcb.com/article/46-how-to-export-diptrace-pcb-to-gerber-files>)

### About

[about us](#)

[get-started](#)

[shipping](#)

[shipping-delivery](#)

[payment method](#)

<https://support.jlpcb.com/category/30-payment-invoice>

[FAQ](#)

<https://support.jlpcb.com/collection/1-faqs>

[faqs](#)

[contact us](#)

<https://support.jlpcb.com/article/45-contact-jlpcb>

[contact-jlpcb](#)

### Family sites

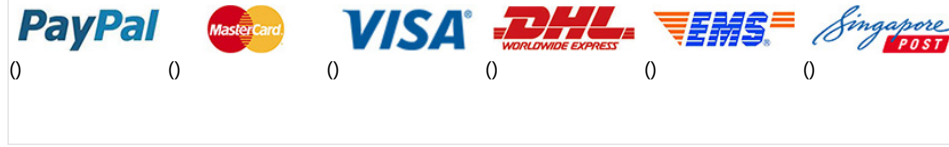


\$6 1st Order Code: JLC6 (<https://lcsc.com/>)

### Certifications



### Our Preferred Partners



---

PROTOTYPE AND SMALL SERIES Reliable PCB Services

© 2018 Shenzhen JIALICHUANG Electronic Technology Development Co.,Ltd. All Rights Reserved.